

Thermography Inspection Report

Company	Westmoreland Electric
Author	Matthew A Fine
Date	10th June 2010

General Comments

We scanned all panels in the building and included only any problems we found

Contents

Description	Page No.
Inspection 1 - Right panel in walts room	3
Inspection 2 - Right panel in Walts Room	4
Inspection 3 - out building panel	5
Summary	6

Inspection 1 - Right panel in walts room

Operator	
Location	Basememt
Equipment	HeatSeeker

Snapshot

Date	9th June 2010
Time	11.31 AM

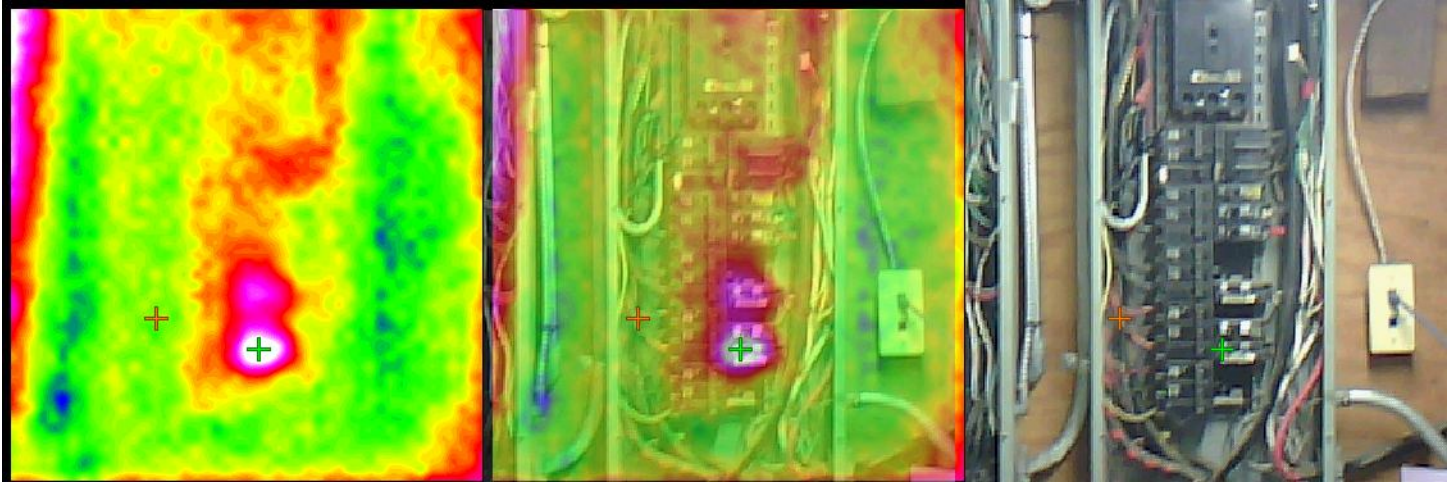
Comment

GFI breaker slightly warm could be electronic problem within breaker

Thermal Snapshot

Thermal and Visible Blend

Visible Image



Temperature Measurements

Cursor 1	85.4 °F
Cursor 2	79.0 °F
Difference	6.4 °F (Cursor 1 - 2)

Measurement Parameters

Emissivity:	0.95
Reflected Temp:	72.0 °F
Measured Load	
Rated Load	
Load %	

Repair Action

Action	Date	Initials
Inspected		
Repaired		
Reinspected		

Repair Priority
1 Low to 5 High

Fault / Recommended Action

Replace breaker

Inspection 2 - Right panel in Walts Room

Operator	
Location	Basememt
Equipment	HeatSeeker

Snapshot

Date	9th June 2010
Time	11.31 AM

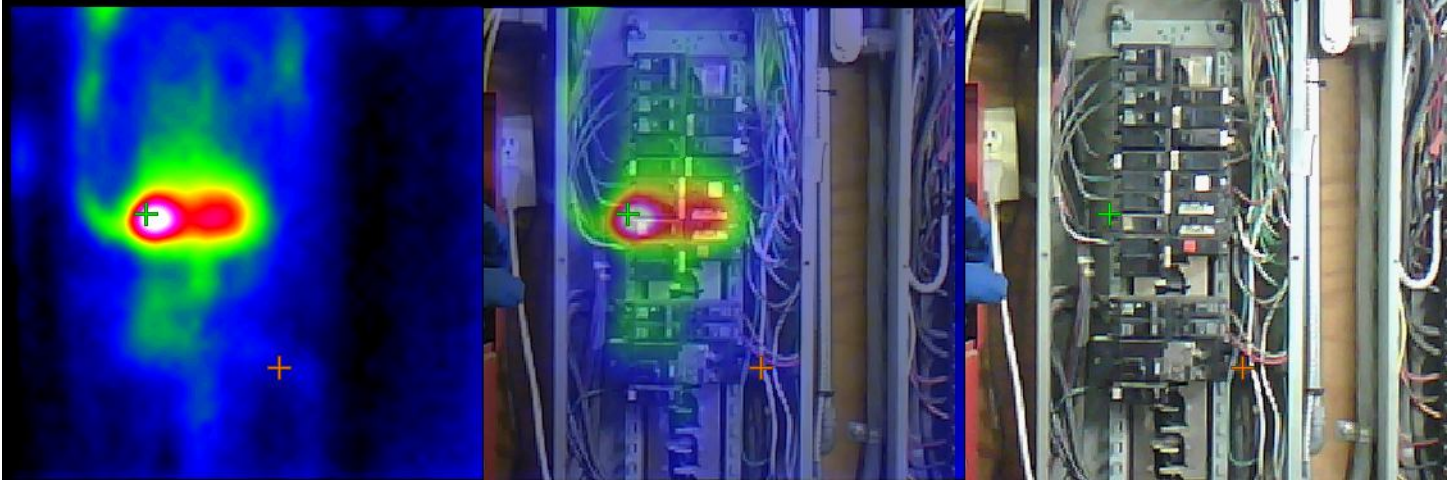
Comment

Overloaded circuit breaker for basement lighting

Thermal Snapshot

Thermal and Visible Blend

Visible Image



Temperature Measurements

Cursor 1	112.3 °F
Cursor 2	83.1 °F
Difference	29.2 °F (Cursor 1 - 2)

Measurement Parameters

Emissivity:	0.95
Reflected Temp:	72.0 °F
Measured Load	
Rated Load	
Load %	

Repair Action

Action	Date	Initials
Inspected		
Repaired		
Reinspected		

Repair Priority
1 Low to 5 High

Fault / Recommended Action

Add circuits for lights and split up

Inspection 3 - out building panel

Operator	
Location	Second building
Equipment	HeatSeeker

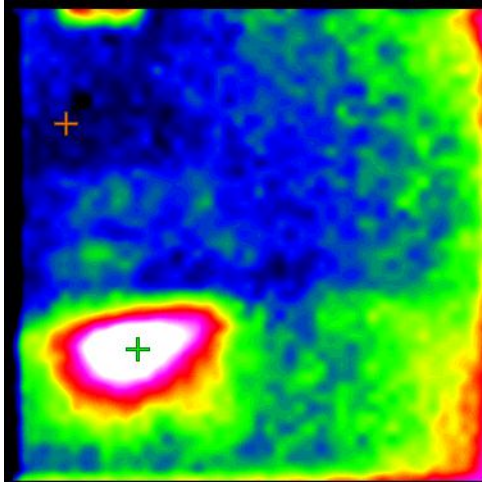
Snapshot

Date	9th June 2010
Time	12.17 PM

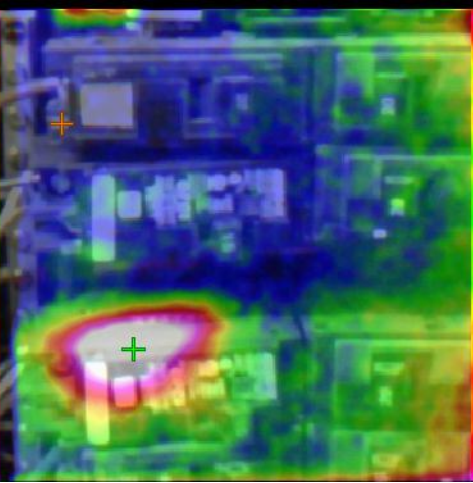
Comment

GFI breaker slightly warm could be electronic problem within breaker

Thermal Snapshot



Thermal and Visible Blend



Visible Image



Temperature Measurements

Cursor 1	89.0 °F
Cursor 2	71.4 °F
Difference	17.6 °F (Cursor 1 - 2)

Measurement Parameters

Emissivity:	0.95
Reflected Temp:	72.0 °F
Measured Load	
Rated Load	
Load %	

Repair Action

Action	Date	Initials
Inspected		
Repaired		
Reinspected		

Repair Priority
1 Low to 5 High

Fault / Recommended Action

Summary

Insp. No.	Location	Equipment	Fault / Action	Priority
1	Basememt	HeatSeeker	Replace breaker	
2	Basememt	HeatSeeker	Add circuits for lights and split up	
3	Second building	HeatSeeker		